



RE100

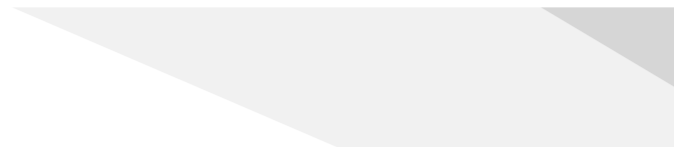
[www.jinkosolar.com](http://www.jinkosolar.com)

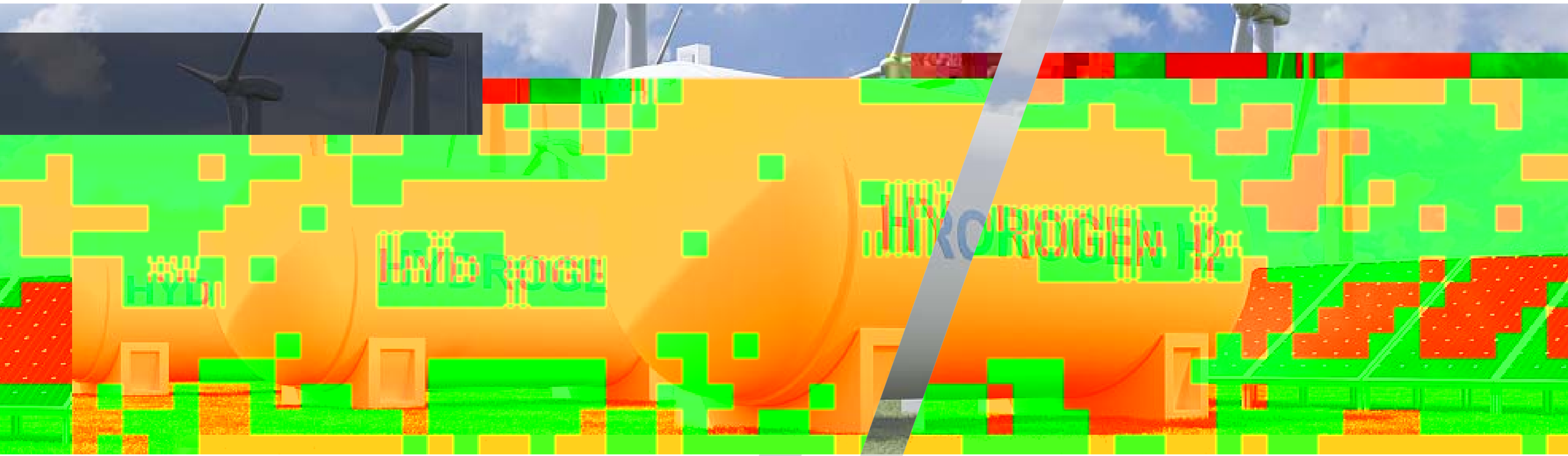


ALL RIGHTS RESERVED © 2020 JINKO SOLAR

"

"





2022 LCOE 26.4%  
23% P N TOPCon  
N TOPCon  
N TOPCon PERC 30% P

LCOE P N  
N TOPCon

		LCOE		LCOH	
N	TOPCon				
		LCOE	LCOH	2.1	/
2.51	/	-H2			
2.9	/	2.86	/	-H2	N
TOPCon					

N

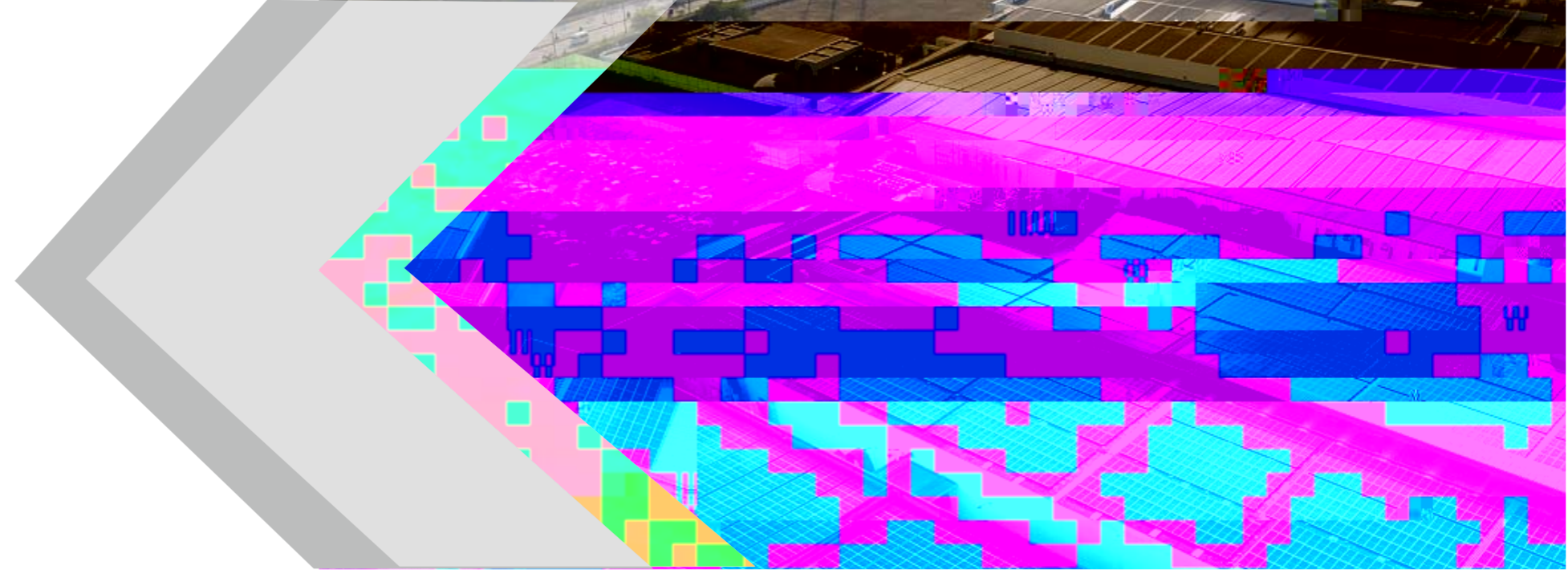
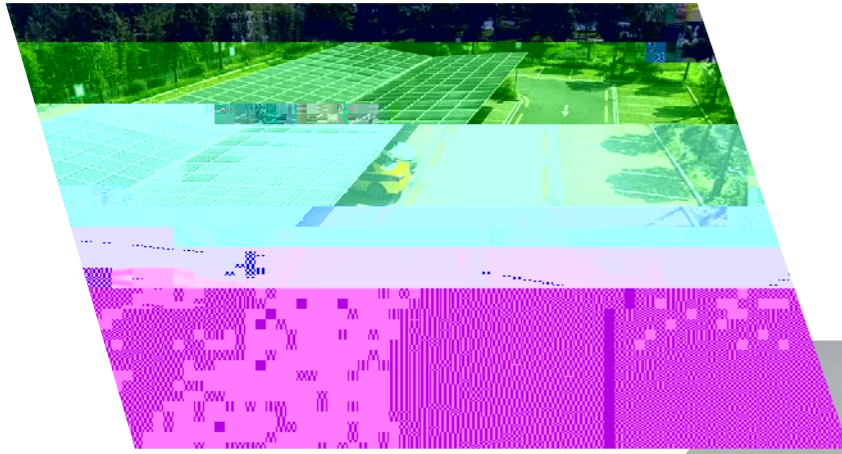
0.29%/



N

P

2030



2020 7

Acwa Power

NEOM

Air Products and Chemicals

NEOM

50

N

N

N

